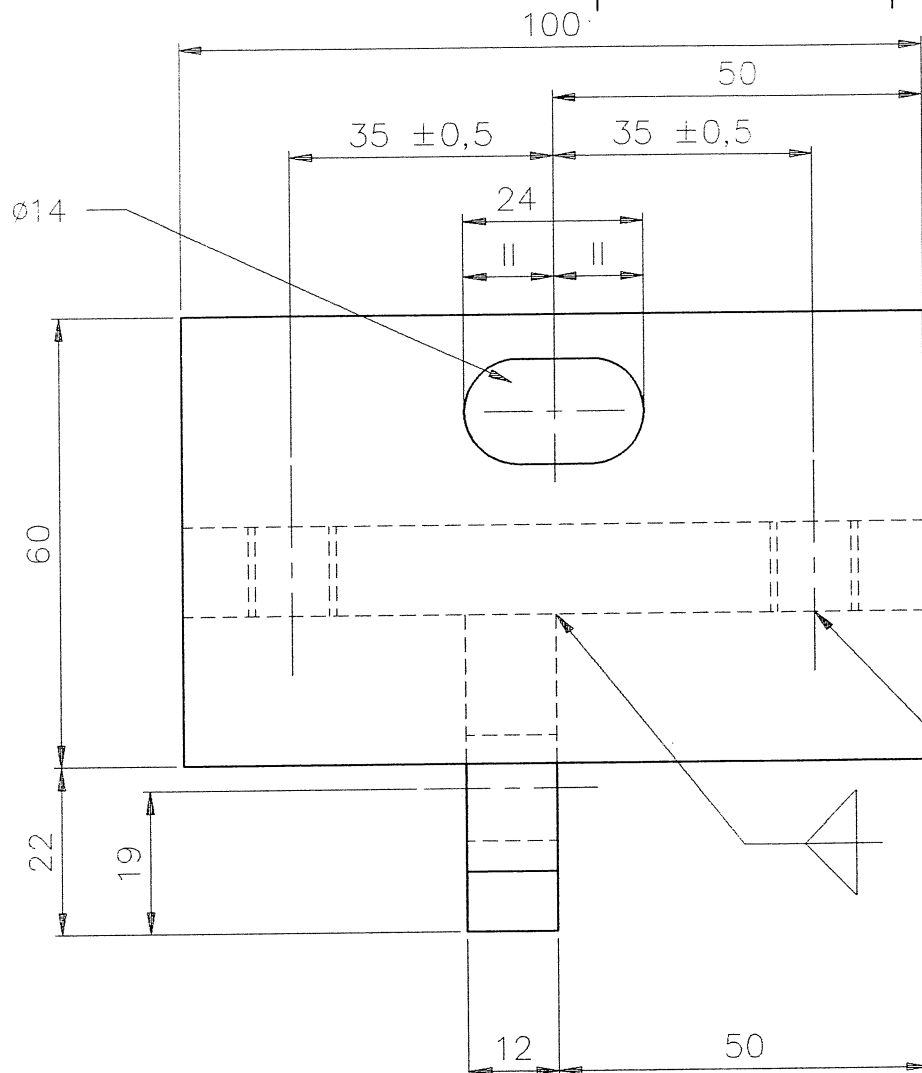


DRILL  $\phi 14$




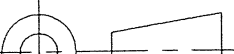
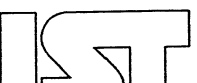
2 HOLES TAP M12

IST	DRAWING STATUS	ACTIVE:	SIGN:	DATE:
	INFORMATION ONLY			
	FOR 3rd. PARTY APPROVAL			
	PERMIT MATERIAL ORDER			
	FOR MANUFACTURE			
	AS BUILT			
	SUPERSEDED			

NOTE:

WELDING ACCORDING TO ASME-CODE

NOTES: (UNLESS OTHERWISE STATED)		MATERIAL:	TOLERANCES UNLESS OTHERWISE STATED							
1) REMOVE ALL BURRS & SHARP EDGES TO 0,5x45° MAX. 2) SCREW THREADS TO ISO 261 3) SURFACE TEXTURE: 3,2/  (Ra TO ISO 1302)	4) ALL INTERNAL RADII 0,8 MAX.	STAINLESS STEEL 304	LINEAR	0	21	201	1001	3001	ANGLES	±1°
				TO	TO	TO	TO	TO		
				20	200	1000	3000	∞		
				±0,5	±1	±2	±3	±5		

										TITLE : SUPPORT BRACKET SHROUDS (R/H)									
										ISSUE	A	B							
	B	—	ID			GDL	92—3—27	TO SABS 0111		DRG NO : VTFO—65060—02									
	A	—	MDB			GDL	91—11—05	DISC NO/FILE NAME	SHT 1 OF 1										
REVISION DETAILS	ISS	C/NOTE	DRAWN	CHECK	APPR	P.OFF.	DATE	VTFOB65M	SCALE : 1:1										
									WHEN PLOTTED ON UNLESS OTHERWISE STATED										
									A3										